

**Harris County ESD 11 Mobile Healthcare
Organizational Chart – Leadership Team**

As of 09/09/21

Harris County Emergency Services District 11
Board of Commissioners

Chief Executive Officer
Douglas R. Hooten

Chief Administrative Officer
Rob Farmer

Compliance Manager

Fleet Manager

HR Manager

IT Manager

Risk & Safety Manager

Community Engagement
Manager

Medical Records Coordinator

Fleet Supervisor (4)

HR Generalist

GIS/Data Analyst

Community Programs
Coordinator

Fleet Mechanic (4)

HR Assistant

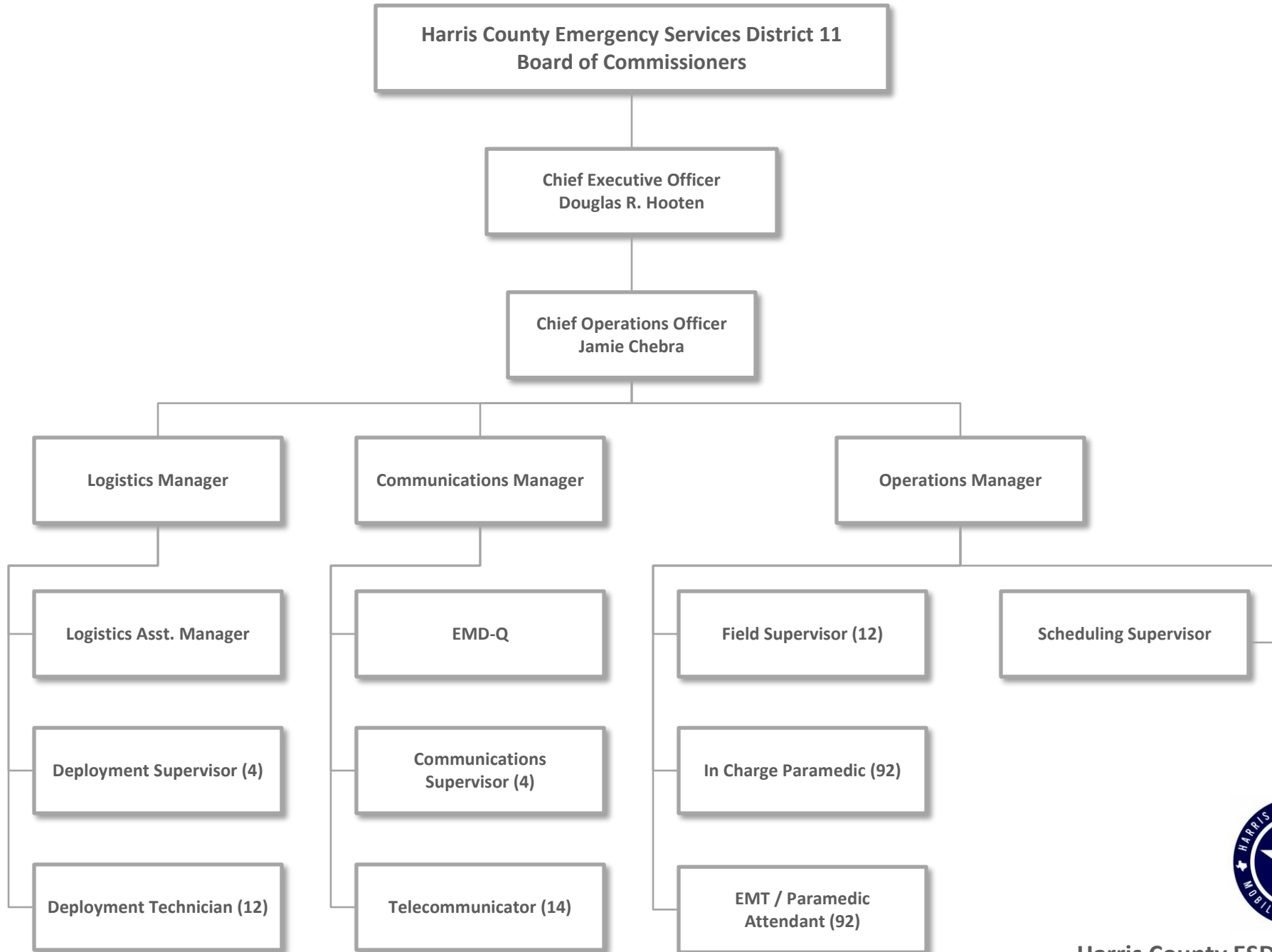
IT Specialist

Fleet Pre-Trip Technician (4)

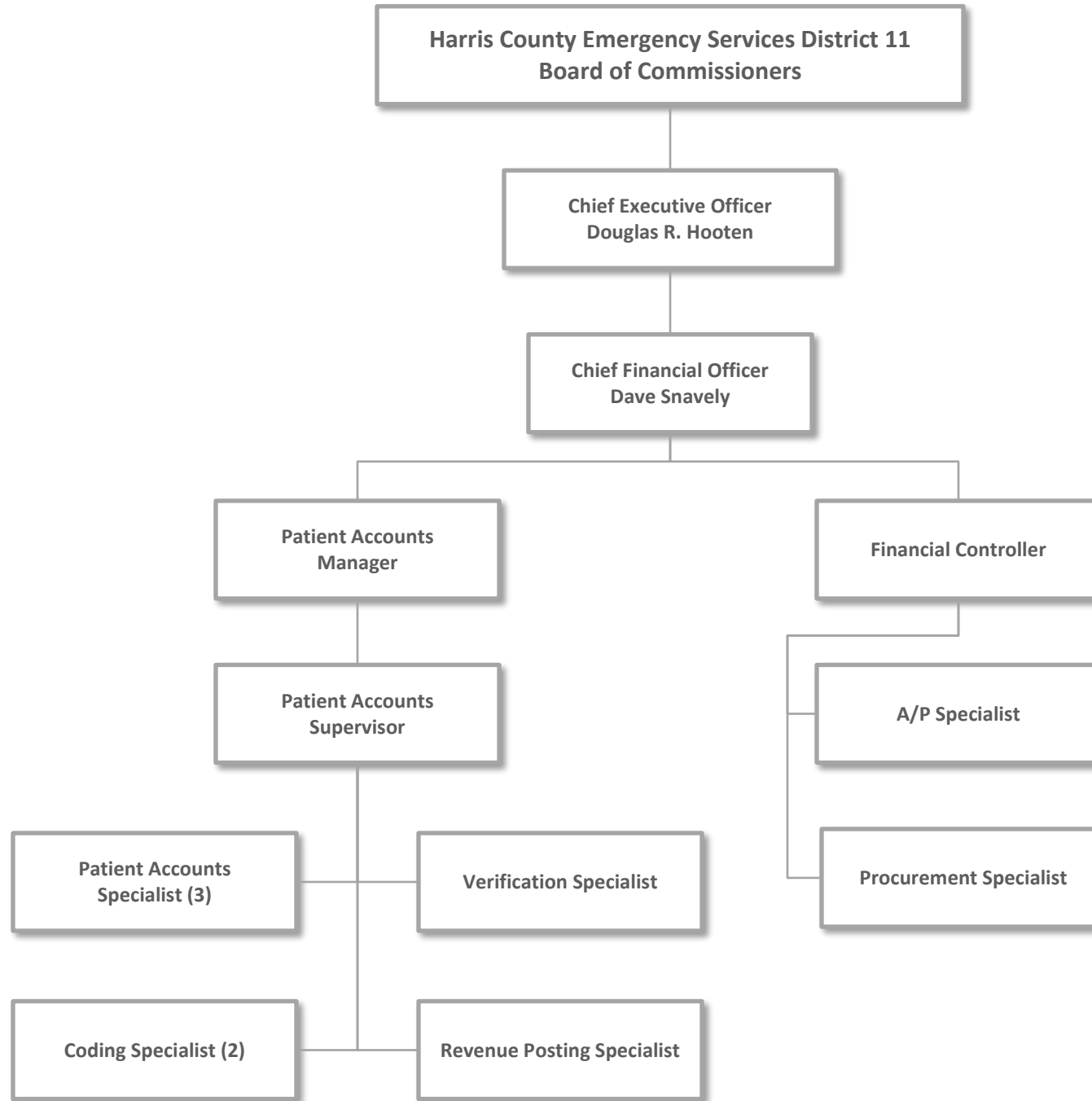
Receptionist

Resiliency Coordinator





Harris County ESD 11 Mobile Healthcare
Organizational Chart - Operations
 As of 09/09/21





Harris County ESD 11 Mobile Healthcare
 Organizational Chart – **Clinical Practice**
 As of 09/09/21